

**WE ARE GLAD TO INFORM YOU THAT OUR MANUFACTURING TOTAL ITEM 540 NOS. WE ARE PROVIDING FOLLOWING SERVICES.**

- **Water Reducing Admixture**
- **Water Reducing and Retarding Admixture**
- **High Range Water Reducing Super Plasticizer and Slump Retention**
- **Water Proofing Concrete Admixture**
- **Water Proofing Membrane**
- **Membrane Bonding Primer**
- **water Proofing Roof Coating**
- **Non- Shrink High Strength Grout**
- **Anchoring Adhesive**
- **SBR Based Bonding Agent**
- **Micro Concrete**
- **Non Metallic Floor Hardener**
- **cementitious Grout**
- **Tiles Adhesive**
- **Anti Termite Liquid**
- **Anti Termite Powder**
- **Bentonite**
- **Epoxy Flooring**
- **Epoxy Grout**
- **Damp Guard**
- **Rust Remover**



ADMIXTURES



**FAIR MATE**

Mfg. The complete range of construction chemicals

**CONTACTS:**

If you are looking to place an order or if you require any further information, please don't hesitate to get in touch.

**Phone:**  
027275317

**Call:**  
+8801712-168556

**Hot Line:**  
+8801721-825242

**Email:**  
barua.fairmate@gmail.com

**Visit:**  
www.fairmate.com  
www.fairmatebd.net



Search "FAIRMATE" at APP Store or Google Play and download our free FAIRMATE iPhone OR Android App Now !



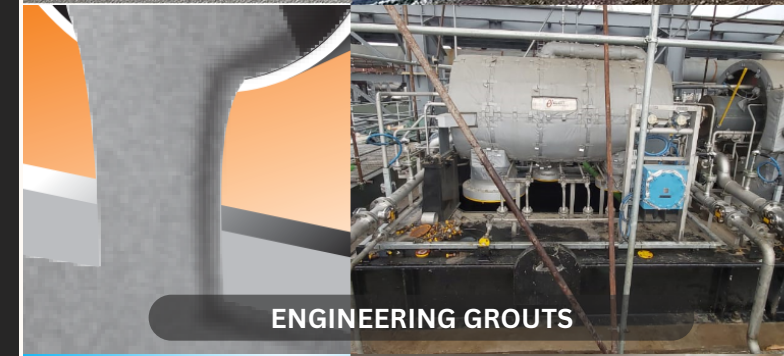
Total Solution Of  
**Construction Chemicals**  
Multi-national Construction Chemicals Mfg. Company



WATERPROOFING SYSTEMS



SURFACE TREATMENT



ENGINEERING GROUTS



INDUSTRIAL FLOOR SURFACES

**FAIRMATE CHEMICALS (BD) LTD.**

**Office**  
26, 1 Atish Deepankar Rd  
(1St Floor), Sabujbagh,  
Bashabo, Dhaka-1214

**Corporate Office:**  
FAIRMATE CHEMICALS PVT. LTD.  
8/1, "SAI SUDHA",  
Arunoday Society, Alkapuri  
Vadodara 390 007. Gujarat, India

**International Headquater:**  
FAIRMATE ESTONIA OU  
Parnu MNT 15,  
Tallinu, Estonia-10141

**Important Note**

Any information contained herein and any advice given by Fairmate is made to the best of our ability on the basis of current industrial practice and our own knowledge and experience. Any responsibility for damages resulting from the use of or reliance upon such information or products such information refers to is limited pursuant to our conditions of sale and delivery. Neither our advice nor any information contained herein shall cause the purchaser or any other person or entity using our products to refrain from testing our products and verifying any suggestions contained in our information or reviewing conflicting patent and proprietary rights; and we expressly request and invite the customer or such other user of our products to perform such tests or have such tests performed prior to any commercial use or application of our products for the specific use and application intended.

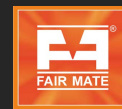
Registered Trade Mark FM/01/17/A

An ISO 9001  
Certified

An ISO (EMS)  
14001 Certified

An OHSAS  
18001 Certified

In Technical Collaboration With RBP Ltd. UK



FAIRMATE is a Multi-National construction chemicals manufacturing company having offices and manufacturing operations in all the continents of the world like Asia, Europe, USA, Africa etc. FAIRMATE operations are spread across the globe and currently having manufacturing operations in more than 20 countries. FAIRMATE is serving Construction Industry for more than three decades.

FAIRMATE manufactures complete range of construction chemicals and is also providing total cost-effective solutions and World Class Services to Specialty Construction Chemical Industry by using our expertise and strategic alliances with leading partners. We have a primary technical collaboration with M/s Resin Building Products Ltd., UK. Our continuous research and efforts in developing new products have resulted in introducing more than 400 products in the Civil Engineering Industry. Our products are broadly classified as Concrete Admixture, Waterproofing System, Engineering Grouts, Industrial Floor Surfaces, Surface Treatment, Concrete Repairs, Fixing Solutions for Tiles & Stone, Protective Coating, Sealants, Readyplast, Highway Repairs, Wall Finish and Liquid Floor.

## FAIRMATE INTERNATIONAL MANUFACTURING HUBS



## SETRELEASE RU

**READY TO USE CHEMICAL MOULD RELEASE AGENT**

### Description:

SETRELEASE RU is a specially formulated blend of mineral oils and chemicals having release properties, which are superior to those of a conventional mould oil. The chemicals react with the alkali in the concrete to form a thin water repellent skin on the surface of the mould, thereby enabling easy stripping from concrete and protects steel and wooden formwork. SETRELEASE RU is supplied as a pale straw coloured, ready to use liquid. It reacts with the alkalis and water at the interface of the concrete and formwork to produce a thin film of lime soap, which breaks the bond enabling the formwork to be readily stripped. Excellent "off form" finish produces a clear reproduction of formwork texture and sharp concrete feature.

### Uses:

SETRELEASE RU provides quick, clean and easy stripping of moulds and formwork. Ensures high quality, fair-faced and stain-free concrete surface. Protects aluminium windows and door frames from plaster and mortar splashes

### Advantages:

- Ensures good fair-faced concrete
- < Can be used on all type of formwork < Non-staining < Minimises cleaning of shutters before re-use < Can be used with steam curing. <

### Packing and Coverage:

SBS SLURRY STAB – 2511 is supplied in 25kg bag.



## WATERREPELL SUPER

**ACTIVE COMPONENT SILANE-SILOXANE PENETRATING WATERREPELLENT**

### Description:

WATERREPELL SUPER is supplied as ready to use, single component penetrating silane-siloxane system which penetrates into porous substrates and then reacts to produce a bonded hydrophobic lining to the pores. It significantly reduces absorption of water into the substrate. WATERREPELL SUPER prolongs the clean appearance of buildings, reduces chemical attack, minimises efflorescence. Any other common water repellent will penetrate and provide water repellence by chemically reacting with the substrate. Due to the excellent water repell properties dirt and other atmospheric impurities are washed off by rain and its clean appearance is maintained for a longer period.

### Uses:

WATERREPELL SUPER is used to protect exposed reinforced concrete structures & other cementitious substrates & masonry. Suitable for use on mineral substrates such as brick, stone, concrete, mortar and asbestos sheeting.

### Advantages:

- Easily applied water repell treatment giving a self cleaning, hydrophobic surface to masonry, brick, stone, concrete, mortar and asbestos sheeting.
- Excellent water repell.
- Increases free-flow resistance and minimises efflorescence.
- Penetrates into substrates.
- Excellent performance and stability.
- Chemical resistance.

### Packing and Coverage:

WATERREPELL SUPER is available in 1, 5, 10, 50 & 100 Ltrs. carboys. 1 ltr. WATERREPELL SUPER will cover approx. 4 to 5 m<sup>2</sup> of surface.



## BROCRETE C 800

WATER REDUCING & PLASTICIZER ADMIXTURE

### Description:

**BROCRETE C 800** is an admixture of new generation based on modified polycarboxylic ether. The product has been primarily developed for applications in high performance concrete where the highest durability and performance is required.

### Uses:

Ideal with Lower and higher grade of concrete mix in prestressed and precast work, pavement concrete, exposed slab concrete, mass concrete pours. To produced high workability concrete repairing little or no vibration during placing. It can be used to all types of cements.

### Advantages:

- Reduced thermal peaks
- Improved workability: Easier quicker in placing and compaction.
- Reduced segregation: Increase cohesion minimizes segregation and bleeding
- Improved surface finish
- Resistance to segregation even at high workability
- Extended setting with longer workability
- Reduced permeability and improved durability
- Increased ease in finishing concrete

### Packing and Coverage:

**BROCRETE C 800** is supplied in, 50, 100, 200, 225 kg carboys, and in bulk quantity on request. The normal dosage is about 0.6%-1.5% by weight of cementitious material. However, the optimum dosage is to be determined by site trials.



## FAIRCRETE RMW

INTREGRAL WATER PROOFING ADDITIVE FOR CONCRETE AND PLASTER

### Description:

**FAIRCRETE RMW** is an integral, high performance waterproofing additive based on high performance polymers, which reduces the permeability throughout the depth of concrete. It confirms to IS 2645 - 2003. FAIRCRETE RMW is approved by Bureau of Indian Standard vide ISI registration no.CM/L7648592

### Uses:

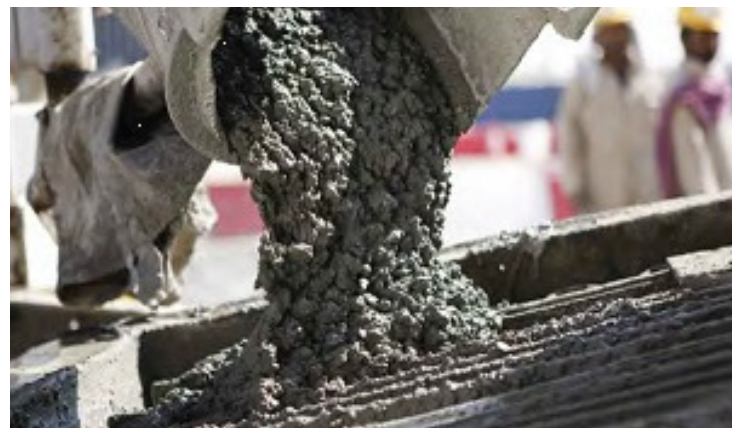
**FAIRCRETE RMW** is a useful product for water retaining structures like terrace, chajjas, water tanks, parapets, bathroom, toilets and industrial structures like reservoirs, cooling tower, etc.

### Advantages:

- Ensures perfect watertight structure.
- Reduces mortar dropping, when used in plaster.
- Ensures good finishing to concrete.
- Apart from waterproofing, it increases strength of concrete and plaster.
- Reduced water cement ratio increases compressive strength and durability of concrete.
- Does not affect the setting time of the concrete and mortar.
- Liquid nature ensures homogeneous mixing.
- Chloride free & free from corrosion.

### Packing and Coverage:

Available in 1, 50, 10, 50, 100, 200 liters carboys. Coverage : an area of 5 to 6 m<sup>2</sup> per liter with specified single coat.



## SBS SLURRY STAB - 2511

STABILIZING WHITE GRANULES POLYMER

### Description:

**SBS SLURRY STAB – 2511** is specially designed for preparing viscous earth-stabilizing fluids or slurries to stabilize even the very challenging soil environments in a variety of excavation methods including tunneling, drilling, trenching, and diaphragm wall applications in the geo construction industry. It is suitable with soils formations such as clay, silt, fine sand, coarse sand & gravels.

### Uses:

When adding **SBS SLURRY STAB – 2511** at the point of excavation please pour **SBS SLURRY STAB – 2511** slowly into a suitable eductor feeding into an adequately flowing stream of slurry emptying into the excavation. **SBS SLURRY STAB – 2511** may also be added directly to the stream of fluid flowing into a pile while the excavation tool is one meter (3 feet) below the surface of the slurry and rotating to form a vortex within the slurry column. Avoid clumping the **SBS SLURRY STAB – 2511** into "white gel balls" in the slurry by slowly sifting product into the fluid stream. Feeding **SBS SLURRY STAB – 2511** too quickly with lack of proper agitation causes balling of the polymer particles into "fish eyes" and larger polymer masses wasting **SBS SLURRY STAB – 2511**. After adding **SBS SLURRY STAB – 2511** to the any excavation raise and lower the excavation tool from the top of the hole to the bottom to assist in proper distribution of the product throughout the slurry column.

### Advantages:

- Rapid increase in viscosity to stabilize highly permeable soils
- Can be used for variety of soil and water conditions
- Controls fluid loss and provides excavation stability
- Produces excellent skin friction by providing a clean surface for the soil interface
- Specially designed for piling & boring work application.

### Packing and Coverage:

**SBS SLURRY STAB – 2511** is supplied in 25kg bag.

## FAIRMATE MICRO SILICA

TCONDENSED MICRO SILICA FUMES

### Description:

**FAIRMATE MICRO SILICA** can be used for tall building, Marine Structures, Shotcrete for Building & structures and underground construction, Waterproof Basement, Bridges, Floors and Pavement.

### Uses:

Threshold Limit values (TLV); TLV - 2MG/M<sup>3</sup> ; Ventilation : Provide good ventilation in working cases. Limit dust formation as far as possible. Personnel protection : For working operation involving dust formation, use face mask to cover eyes, nose and month. Gloves will prevent drying of the skin. Flammability : Inflammable combustion.

### Advantages:

- Provides the ultimate corrosion protection
- Improves the performance of fibre reinforced shotcrete.
- Cost effective.
- Eliminates the need for membranes.
- Can be used to replace cement and reduce temperature differentials.
- Ideal for industrial floors and pavements.
- Improves concrete pumpability while its high strength reduces the extent of costly and congested reinforcement.
- Protects from alkali aggregate reaction.

### Packing and Coverage:

Grade Bag (Kg) FCL (T) Densified 20 16.8 Undensified 20 11.2 Slurry Grade 15 10.8 All bags shrink wrapped on pallets. Densified silica fume is supplied in degradable bags unless otherwise specified.



## FAIRFLO

NORMAL SUPER PLASTICISER

### Description:

**FAIRFLO** is supplied as brown liquid based on sulphurated Naphthalene condensates. The powerful dispersing action of the superplasticizer can be used in many ways to obtain dense, high strength durable concrete (M35, M40 and M45). The high water reduction properties can make **FAIRFLO** ideal application in precast concrete where high early strength is of paramount importance. **FAIRFLO** is chloride free. It conforms to BS 5075 part -3, IS 9103 : 1999 and ASTM C-494 type 'F' & BS : EN 934-2 : 1998. **FAIRFLO** is approved by Bureau of Indian Standard vide ISI registration no. CM/L3604249.

### Uses:

To produce pumpable concrete, high water reduction properties leads to high early & 28 days strength & flowing concrete. To produce high workability concrete requiring little or no vibration during placing.

### Advantages:

- Increases strength
- Used in precast concrete work
- Safe in prestressed concrete
- Improves cohesion thus aids pumping of concrete
- Facilitates rapid placing of concrete with little or no vibration
- Makes the concrete denser, hence durability increased

### Packing and Coverage:

1, 5, 20, 50, 200 kg. carboys. The normal dosage is about 0.6%-1.5% by weight of cementitious material. However, the optimum dosage is to be determined by site trials.



## FAIRPLAST IP

WATERPROOF PLASTER ADDITIVE

### Description:

**FAIRPLAST IP** is supplied as ready to use powder which should be dry mix in mortar. It introduces air into mortar in the form of extremely fine and evenly dispersed bubbles. This entrained air imparts improved workability which, due to the stability of the tiny bubbles, prevents premature stiffening and avoids the need for repeated "knocking up". In the hardened mortar these minute bubbles provide a cautionary effect in screeds or renders. Capillary channels are also made discontinuous by the formation of the bubbles, thus reducing the penetration of water. It conforms to BS-4887 & IS - 2645 : 2003. **FAIRPLAST IP** is approved by Bureau of Indian Standard vide ISI registration no. CM/L7648592.

### Uses:

**FAIRPLAST IP** is suitable for use with sand/cement plaster where it is required to reduce permeability. It can also be used in external plastering of roof and balcony screeds, plastering of basements and tanks, external masonry walls.

### Advantages:

- Easier spreading of mortar and easy placing of bricks and blocks
- Reduces mortar droppings from surface
- Greater resistance to frost damage during construction
- Protection against freeze-thaw damage after construction
- Reduces permeability hence ensures waterproof plaster
- Reduces drying shrinkage cracks.
- Chloride free and hence no risk of corrosion.

### Packing and Coverage:

200gms pouch, 1 kg pouch, 5kg, 25kg HDPE bags. Dosage : 200gms per 50 kg cement.



## FAIRMATE SMOOTH PUMPING AID (L)

HIGH PERFORMANCE PUMPING AID FOR CONCRETE PUMP

### Description:

**FAIRMATE SMOOTH PUMPING AID (L)** is a ready to use compound in powder form easily soluble in water and is available in pre measured plastic pack. This uniquely formulated compound consists of high performance ingredient which is very effectively used for priming of all types of concrete pumps instead of using the conventional slurry made of cement, sand and water. Using this compound enables a considerable cost

### Uses:

**FAIRMATE SMOOTH PUMPING AID (L)** is used as a most effective priming compound and as a pumping aid for concrete pump. It is used very effectively when concrete is pumped through long distance pipelines from the batching plant to the pouring point. The phenomenon of friction when the concrete passes through long pipelines get reduced and the lubrication effect of the compound makes concrete

### Advantages:

- Prepacked and ready to use
- Fast Setting
- Self Leveling and smooth finish
- Excellent consistency & Assured quality
- Excellent workability can be pumped or poured.
- Economical.
- More cost effective than equivalent Resin based systems. Rapid hardening hence allows foot traffic after 4 hrs. depending on the temperature and humidity.
- High abrasion resistance.
- Vapor permeable.
- Available in cement Grey, Red & Green Color

### Packing and Coverage:

**FAIRTOP FAST FLOOR** is available in 18 kg HDPE bag, covering 1.8 kg/m<sup>2</sup> at 1mm thickness. Note : Coverage figures are theoretical - due to wastage factors and the variety and nature of substrates, practical coverage figures may be reduced, this will vary with site and application conditions.

## FAIRCURE WC

TWHITE PIGMENTED CONCRETE CURING AID

### Description:

**FAIRCURE WC** is supplied as a white pigmented, non-staining, non toxic aqueous solution which when applied to fresh concrete surfaces, reacts with free lime and seals the pores, thus reducing the evaporation of water from the mix which assists curing process and increasing durability. Applied surfaces can be easily identified due to white pigment. Only single coat is sufficient for complete curing process eliminating the water curing.

### Uses:

**FAIRCURE WC** is a white pigmented concrete curing aid which eliminates water curing and when applied to structures can be identified easily. It helps the curing process by preventing evaporation and helps to attain strength and durability. Used for large concrete surface areas such as floors, screeds, granolithic topping, sloped slabs and vertical structures.

### Advantages:

- Ready to use
- Can be easily applied with brush or spray.
- Can be easily identified
- Does not form film
- Single coat application
- Replacement of water curing
- Cost effective
- Non-toxic and non flammable
- Chloride free.

### Packing and Coverage:

**FAIRCURE WC** is supplied in 1, 50, 10, 50, 100, 200 liters carboys. **FAIRCURE WC** will cover an area of 5 to 6 m<sup>2</sup> per litre with specified single coat.





## FAIRCRETE RMW CRYSTALLINE

**NORMAL SETTING CRYSTALLINE INTEGRAL WATERPROOFING ADDITIVE**

### Description:

**FAIRCRETE RMW CRYSTALLINE (LIQUID)** is normal setting crystalline integral waterproofing additive which is a complex blend incorporating inorganic silicates carried in an inert gelatinous dispersing agent which reduce the water absorption of cement-bound mixes and to decrease their permeability.

### Uses:

It has been used extensively for waterproofing boiler houses, basements, ducts, inspection, floors, foundations, conveyor and grain drying pits, retaining walls, water storage tanks, swimming pools, and other concrete structures in contact with water.

### Advantages:

- Watertight structures: The concrete is waterproofed throughout its entire mass.
- Increased durability: Better resistance to chemical attack. Greater protection of reinforcing steel. Increased frost resistance. No reduction in strength of concrete.
- Better appearance : FAIRCRETE RMW CRYSTALLINE (LIQUID) prolongs the clean appearance of concrete and renders reduces efflorescence.
- Compatible with all admixtures conforming to ASTM C 494.

### Packing and Coverage:

FAIRCRETE RMW CRYSTALLINE (LIQUID) is supplied in 5, 25 and 200 kg. 0.8% by weight of cement and 400gm per bag of cemen



## FAIRCRETE R1

**HIGH RANGE WATER REDUCER AND RETARDING PLASTICISER**

### Description:

**FAIRCRETE R1** is based on polymeric material and acts as both high range set retarder and plasticiser. It is supplied as a brown liquid which is instantly dispersible in water. FAIRCRETE R1 is a high range retarding and plasticizing admixture which can be used to derive the following benefits. When added to concrete mixes the admixture is absorbed onto the cement particles. It then acts as a dispersing agent which breaks down agglomerates of cement particles and enables the water in the mix to perform more efficiently. It delays the initial hydration of the cement which results in retardation of the setting time.

### Uses:

To retard the setting of concrete and to reduce the water requirement for a specific workability.

### Advantages:

- Extends setting time-over 5 hours
- Avoid cold joints
- Reduction in w/c ratio
- Reduced permeability
- Greater strength and durability
- Can be use for pump concrete
- Can retains the slump for longer time.

### Packing and Coverage:

FAIRCRETE R1 is supplied in 1 ltr., 5 ltr., 10 ltr., 20 ltr., 50 ltr., & 100 ltr . carboys.



## FAIRTOP FAST FLOOR

**CEMENTITIOUS SEAMLESS, SELF SMOOTHING HARDWEARING FLOORING SYSTEM**

### Description:

**FAIRTOP FAST FLOOR** is a pre-blending compound having selected cements, hard wearing graded aggregates modified with special polymers and flow agents. It is supplied as a dry, grey powder which requires only the addition of water to produce a self-smoothing, free flowing material. FAIRTOP FAST FLOOR may be applied by hand or by use of a continuous mixer pump

### Uses:

**FAIRTOP FAST FLOOR** is suitable for use in Industrial ware houses, factories, & suitable for use in schools and hospitals, commercial buildings, up grading and refurbishing of existing internal concrete slabs. It can also be suitable for use in car parking and light to medium engineering operations.

### Advantages:

- Prepacked and ready to use
- Fast Setting
- Self Leveling and smooth finish
- Excellent consistency & Assured quality
- Excellent workability can be pumped or poured.
- Economical.
- More cost effective than equivalent Resin based systems. Rapid hardening hence allows foot traffic after 4 hrs. depending on the temperature and humidity.
- High abrasion resistance.
- Vapor permeable.
- Available in cement Grey, Red & Green Color

### Packing and Coverage:

FAIRTOP FAST FLOOR is available in 18 kg HDPE bag, covering 1.8 kg/m<sup>2</sup> at 1mm thickness. Note : Coverage figures are theoretical - due to wastage factors and the variety and nature of substrates, practical coverage figures may be reduced, this will vary with site and application conditions.



## FAIRCURE WC

**TWHITE PIGMENTED CONCRETE CURING AID**

### Description:

**FAIRCURE WC** is supplied as a white pigmented, non-staining, non toxic aqueous solution which when applied to fresh concrete surfaces, reacts with free lime and seals the pores, thus reducing the evaporation of water from the mix which assists curing process and increasing durability. Applied surfaces can be easily identified due to white pigment. Only single coat is sufficient for complete curing process eliminating the water curing.

### Uses:

FAIRCURE WC is a white pigmented concrete curing aid which eliminates water curing and when applied to structures can be identified easily. It helps the curing process by preventing evaporation and helps to attain strength and durability. Used for large concrete surface areas such as floors, screeds, granolithic topping, sloped slabs and vertical structures.

### Advantages:

- Ready to use
- Can be easily applied with brush or spray.
- Can be easily identified
- Does not form film
- Single coat application
- Replacement of water curing
- Cost effective
- Non-toxic and non flammable
- Chloride free.

### Packing and Coverage:

FAIRCURE WC is supplied in 1, 50, 10, 50, 100, 200 liters carboys. FAIRCURE WC will cover an area of 5 to 6 m<sup>2</sup> per litre with specified single coat.





## WATERGUARD I

**HIGH PERFORMANCE, INSULATING  
POLYMERISED WATER PROOF COATING**

### Description:

**WATERGUARD I** is a two part polymer based waterproofing coating, specially designed polymer to ensure perfect water tightness, with insulating property to cool down temperatures and ensures the flexibility to cover the thermal stresses. **WATERGUARD I** has an excellent frost resistance and can be used on vertical and horizontal surfaces.

### Uses:

**WATERGUARD I** can be used as a thermal insulation coating on concrete metal surfaces, roof slabs and walls of building. It can also be used on the interior and exterior walls, roof of freezer rooms and cold storage facilities.

### Advantages:

- Prepacked factory controlled, ensures consistent quality.
- Excellent resistance to water provides good insulation property (8°C variation).
- Minimum surface preparation is required.
- Can be applied on horizontal and vertical surfaces.
- Excellent flexibility.
- Easy to apply.
- Excellent bonding with the cement base substrates.
- Durable and High UV resistance.
- Non-toxic and corrosion resistant thus eco-friendly .
- Available in attractive white color.

### Packing and Coverage:

**WATERGUARD I** is a prepacked two component system consisting of 10 kg powder + 5 kg liquid, specially designed polymer processed cement and fillers, which covers approximately 10 to 12 m<sup>2</sup> depends upon the substrates.



## WATERGUARD A

**TWO COMPONENT, ACRYLIC CEMENTITIOUS  
WATERPROOFING COATING**

### Description:

**WATERGUARD A** is prepacked two component acrylic modified cementitious waterproofing coating for concrete & masonry that can be applied on well prepared sound substrates to provide extremely tough durable waterproofing coating of 1.5-2 mm when applies with glass fiber sheet (**WATERGUARD GRS**).

### Uses:

**WATERGUARD A** is used to all structures that are required to be waterproofed and protected against the ingress of moisture like Basements, Water tanks, Swimming Pools, Retaining Walls, Bridge Walls, Roof, Terrace & balconies, Lift Shafts, Reservoirs, Dams, Dock gates etc. **WATERGUARD A** provides a tough and durable coating and it cannot be easily damaged or worn out.

### Advantages:

- Prepacked easy to use water proofing coating
- Ensures excellent water proofing characteristics
- Excellent adhesion
- Flexible enough to bridge hairline cracks
- Allows surfaces to breath
- Economical and cost effective water proofing system
- Minimum surface preparation needed
- Non-toxic & approved for potable water contact
- Good resistance to Co & Chloride ion diffusion <sup>2</sup>
- Ease of application - brush applied

### Packing and Coverage:

(18kg powder + 10 ltr. liquid 16.5m<sup>2</sup> to 25m<sup>2</sup>) (9kg powder + 5 ltr. liquid 8.25m<sup>2</sup> to 12.5m<sup>2</sup> 0.8)(1kg powder + 0.45 ltr. liquid 0.75m<sup>2</sup> to 1.15m<sup>2</sup> )



## FAIRTOP STD

**HARDWEARING, ABRASION RESISTANT  
MONOLITHIC INDUSTRIAL FLOORING COMPOUND**

### Description:

**FAIRTOP STD** is supplied as a monolithic industrial flooring compound ready to use factory controlled, dry shake cementitious system blended with special aggregates, selected for high abrasion and wear resistance and additives. **FAIRTOP STD** is used to obtain a dense, tough, abrasion resistant industrial floor with non dusty and nonslip characteristics. For extremely heavy flooring 12 mm thick **FAIRTOP HD** ready to use monolithic floor hardener is recommended. (A separate data sheet is available on this product.)

### Uses:

**FAIRTOP STD** can be used in Loading bays, Factories, Warehouse, Car Parking areas, Truck Lanes, Workshops, Garages, Subways, Power Stations & Abattoirs. Recommended for refurbishment over terrazzo, Quarry or ceramic tiles. Also, recommended for workshops, show room, food & beverage processing areas to withstand moderate to heavy traffic

### Advantages:

- Ready to use, factory controlled
- Eliminates on-site mixing
- Provides dense, non- porous surface on application
- Hard wearing, abrasion resistant
- Monolithic bond with the base concrete
- Non dusty and non slip surface
- Facilitates easy cleaning
- Long life and low maintenance
- Available in various colors
- Non-metallic and iron free - does not rust.

### Packing and Coverage:

**FAIRTOP STD** is supplied in 25 Kg lined HDPE Bags and coverages are as follows. For light duty : 2.5- 3.5 kg/m<sup>2</sup> For medium duty : 4.0-5.0 kg/m<sup>2</sup> For heavy duty : 5.5- 6.5 kg/m<sup>2</sup>



## FAIRSCREED SL

**4 COMPONENT BASED EPOXY SELF LEVELING  
SCREED**

### Description:

**FAIRSCREED SL** has been designed to provide a hard wearing, impervious, seamless floor finish which is hygienic and easy to clean. **FAIRSCREED SL**, with its combination of attractive finish and excellent resistance to many chemicals, is suitable for a wide range of light industrial environments. **FAIRSCREED SL** is typically applied at thickness of between 0.5mm to 2mm. **FAIRSCREED SL** is supplied as a four pack product, consisting of base, hardener, pigment paste & aggregate, all pre-weighted and ready for mixing.

### Uses:

**FAIRSCREED SL** is suitable for use in laboratories, pharmaceutical plants, hospitals, food preparation areas, electronics assembly factories, etc.

### Advantages:

- Fast and easy application
- Economical
- Solvent Free
- Hygienic and easy to clean
- Excellent chemical resistance
- Very good adhesion to concrete
- Seamless
- Good aesthetic appearance
- Available in various colors
- Does not support growth of bacteria and fungus
- Easily cleaned and maintained
- Possible to apply from 0.5mm to 2mm thickness

### Packing and Coverage:

**FAIRSCREED SL** is suitable for use in laboratories, pharmaceutical plants, hospitals, food preparation areas, electronics assembly factories, etc.



## WATERGUARD LIQUID MEMBRANE

LIQUID APPLIED SINGLE COMPONENT WATER BASED ELASTOMERIC WATERPROOFING MEMBRANE

### Description:

**WATERGUARD LIQUID MEMBRANE** is a highly elastic tough waterproofing system based on modified bitumen water based co-polymer. WATERGUARD LIQUID MEMBRANE is highly resistant to aggressive soils and soluble salts providing an effective continuous barrier and protection against water Bourne damage. WATERGUARD LIQUID MEMBRANE is ideally suited as a vapor/salt barrier to building facades behind granite, marble, stone cladding, and curtain wall elements.

### Uses:

WATERGUARD LIQUID MEMBRANE is particularly suitable for a wide range of applications including wet areas, foundations, basements, terraces, retaining walls, bridge abutments, planters, inverted roofs and remedial repairs to felt, asphalt, concrete, fibrous cement or other roof structures when protected from exposure to direct sunlight.

### Advantages:

- Liquid application, easy to apply.
- No Joints.
- High build properties ensure rapid application.
- High elasticity, ensuring a permanently flexible barrier over a wide range of temperatures.
- Thermal stability.
- Excellent adhesion.
- Can be applied to a range of substrates.
- Outstanding resistance to oxidation and brittleness.

### Packing and Coverage:

is supplied in 20 kg pails. It has a coverage of 1.5 - 2 m<sup>2</sup> per kg at 1mm WFT. Coverage rate will vary with substrate condition and profile.



## FAIRMATE WATERPLUG

A FAST SETTING PLUGGING COMPOUND FOR STOPPAGE OF RUNNING WATER

### Description:

**FAIRMATE WATERPLUG** is a fast setting ready to use hydraulic compound which stops running water instantly. FAIRMATE WATERPLUG sets in 1 to 3 minutes depending on temperature and the surface to which it is applied. Lower temperature will retard the setting time and higher temperature accelerates the setting time. FAIRMATE WATERPLUG is based on mixture of cements, aggregates, special fillers which minimizes the risk of thermal cracking.

### Uses:

FAIRMATE WATERPLUG will stop running water and seepage through concrete and masonry walls, dams, wall and floor junctions. It can be used as a grout around pipes.

### Advantages:

- Stops running water instantly
- Sets under water
- Non shrink, non-metallic
- High structural strength
- Easy to use.
- Low exotherm minimizes thermal cracking.

### Packing and Coverage:

FAIRMATE WATERPLUG is supplied in 1 kg, 5 Kg, 25 kg Bag.



## FAIRSEAL

GUN GRADE TWO PART POLYSULPHIDE SEALANT

### Description:

**FAIRSEAL** is a two-part joint sealant based on liquid polysulphide polymer. It is supplied in 1 kg. & 5 kg, tins containing a base component and Hardener (curing agent) in the correct proportion which when mixed together cure to form a fairly stiff rubber-like material. When cured, the sealant exhibits excellent adhesion to most surfaces including concrete, glass, aluminum and stainless steel. It is to be used for the highest performance in sealing expansion joints where large movements is anticipated in concrete construction and for joints between diverse construction materials. FAIRSEAL is suitable for sealing vertical joints only. FAIRSEAL has superior joint movement accommodation with strong adhesion to most building materials. It is chemically resistant to water, oils, solvents etc.

### Uses:

FAIRSEAL is used for sealing expansion construction joints between structures in building construction like infill panels, metal finishes and in civil engineering structures like basements, buildings, walls and brickwork joints etc. FAIRSEAL is suitable for sealing vertical joints only

### Advantages:

- Excellent weathering characteristics with resistance to rain, snow, heat & ultraviolet light
- Quick curing with low shrinkage
- Accommodates continuous and pronounced cyclic movement
- Gun grade sealant for vertical joints.
- Excellent adhesion to most common substrates
- High resistance to ageing influences, physical damage and climatic extremes
- Resistance to petrol, diesel, jet fuel and most other common solvents & also unaffected by mild acids and alkalies.

### Packing and Coverage:

FAIRSEAL is available in big packing of (4.600 kg base + 0.400 kg hardener) and small packing of (0.920 kg base + 0.080 kg hardener).

## FAIRSEAL P

POURABLE GRADE TWO PART POLYSULPHIDE SEALANT

### Description:

**FAIRSEAL P** is a two part, pourable, self leveling, polysulphide based joint sealing compound consisting of base compound containing a liquid polysulphide polymer and second part being an accelerator containing a curing agent. After mixing, the compound cures to form a tough, rubber like material with excellent flexibility and outstanding resistance to weathering water, salts, oils, mild alkalis etc. FAIRSEAL P is suitable for sealing horizontal joints due to its pouring consistency. FAIRSEAL P has excellent adhesion to most surfaces including concrete, wood, glass, aluminum and stainless steel. For all porous surfaces like concrete wood, FAIRSEAL PRIMER is necessary.

### Uses:

FAIRSEAL P is suitable for sealing horizontal structural expansion joint structures like building superstructures, subways, basements, PQC roads, floors, airport runways and reservoirs.

### Advantages:

- Excellent weathering characteristics with resistance to rain, snow, heat & ultraviolet light
- It gets cured quickly with low shrinkage
- Accommodates continuous and pronounced cyclic movement
- Excellent adhesion to most common substrates
- High resistance to ageing influences, physical damage and climatic extremes
- Resistance to petrol, diesel, jet fuel and most other common solvents & also unaffected by mild acids and alkalies
- Forms a tough elastic rubber-like seal
- Pourable grade sealant for horizontal joints
- Long service life
- Maintenance free

### Packing and Coverage:

FAIRSEAL P is available in big packing of (4.600 kg base + 0.400 kg hardener) and small packing of (0.920 kg base + 0.080 kg hardener).



## FLOWGROUT 60

ULTRA HIGH STRENGTH, FREE FLOWING, NON-SHRINK CEMENTITIOUS GROUT

### Description:

**FLOWGROUT 60** is based on specially processed cement containing fillers and additives. FLOWGROUT 60 is supplied as ready to use grout requiring addition of precise quantity of water at site (3.750 to 4 Liter/25 Kg Grout). FLOWGROUT 60 is suitable for gap widths of between 10mm - 50mm.

### Uses:

**FLOWGROUT 60** can be used to Bolt pockets and base plate grouting of all equipment, Crane, stanchion bases and all types of machinery with dynamic load.

### Advantages:

- Prepacked, factory controlled consistent material needing only addition of water
- Shrinkage offset by expansion to ensure original volume is retained
- Free flowing, self levelling grout
- Easy placement and filling of underbases of machinery
- Non metallic and chloride free.
- Holds up to industrial machinery vibration & impact.
- Extended work time for easy placement.
- Excellent adhesion to concrete and steel.
- Non staining.
- Contains no calcium chloride additives so there can be no rusting or staining of metal contacts or reinforcement.
- High ultimate strength and durability.

### Packing and Coverage:

FLOWGROUT 60 is supplied in 25 Kg. lined HDPE bag.



## ANCHORGROUT

HIGH STRENGTH, THIXOTROPIC, POLYESTER GROUT

### Description:

**ANCHORGROUT** is a two part, pre-measured blend of polyester resins, with selected graded fillers, which, when mixed, offer a high strength, fast setting, fast curing grout of thixotropic consistency. Designed for the anchoring of steel bars and bolts into concrete, machinery and brickwork where speed of installation and early load bearing capacity is required.

### Uses:

**ANCHORGROUT** can be used for high strength corrosion resistant, anchoring of bolts and a permanent installation of reinforcement doweling and starter bars, foundation bolts, base plates, hand rails, safety fences, wall tiles, railway tracks, tie back anchors and grout for tower cranes. Due to its thixotropic nature **ANCHORGROUT** can be used in vertical, horizontal and overhead situations where the hole diameter exceeds the bar diameter by not less than 4 mm and not more than 25 mm.

### Advantages:

- Rapid strength gain
- Vibration resistant
- Corrosion resistant
- High early strength
- Extremely durable
- Weather resistant
- Can be used in damp conditions
- Fast setting and self curing.
- Ideal product for hole grouting having diameter max 25mm & min. 4mm.

### Packing and Coverage:

**ANCHORGROUT** is supplied in 1 Kg



## SAFECORE RR

LIQUID FOR CLEANING R-BARS AND STEEL SURFACES

### Description:

**SAFECORE RR** is a specially designed organic liquid which releases parts bound fast due to rust, corrosion, carbon, tar, etc. It is used effectively to clean rust from steel surfaces before applying any protective coating on it.

### Uses:

During repairs to concrete structures. Maintenance of mild steel structures like tanks, water pipelines, shuttering plates and other corroded steel surfaces.

### Advantages:

- Simple application by brush.
- Effective rust removal, even from areas difficult to reach.
- Contains no chloride-no chance of enhancing corrosion.
- Cost effective coverage.
- Removes oil, grease, carbon and dust particles deposited.
- Self lubricating.
- Shine and metal finishing.

### Packing and Coverage:

1 ltr., 5 ltrs., 10 ltrs., 20 ltrs., 50 ltrs. **SAFECORE RR** will cover approx 15 m<sup>2</sup> per 1 ltr. depending upon the surface.



## CRACKFILL PASTE

TREDDY TO USE FIBRE REINFORCED ACRYLIC POLYMER BASED CRACK FILLING PASTE

### Description:

**CRACKFILL PASTE** is an easy to use, acrylic polymer based crack filling paste, which ensures fibre reinforced perfect filling of cracks and will not allow water penetration.

### Uses:

Surface Preparation : Chip out the crack in 'V' groove and clean all the debris and loose particles. Prewet the surface. The prepared surface should be free from oil, grease, dust, dirt etc. Application : To obtain a smooth surface, use a flat tool, like a steel spatula to apply the material into the cracks.

### Advantages:

- Ready to use.
- Excellent thixotropies.
- Excellent adhesion.
- Easy to apply.
- Excellent finishing.
- Can be used on all common type of building interiors and exteriors.
- Dense and cohesive paste will not allow water penetration.
- High performance non structural crack filling paste.
- Allow surface to breath.
- Resistance to weather and chemical.
- Non toxic.
- Available in attractive white color.

### Packing and Coverage:

**CRACKFILL PASTE** is an acrylic polymer based crack filling paste available in 1kg, 5kg, 10kg and 20kg plastic bucket. 1kg of **CRACKFILL PASTE** will approximately cover 7 to 8 running meter having the width and depth of 3mm to 4mm.





## CEMSCREED HM(F)

GENERAL PURPOSE FIBRE REINFORCED SHRINKAGE COMPENSATING CEMENTITIOUS MICRO CONCRETE

### Description:

**CEMSCREED HM (F)** is supplied as a ready-to-use, blend of dry powders which requires only site addition of water to produce a free flowing, non-shrink repair micro concrete. The materials is based on Portland cement, graded aggregates, fillers and additives which impart controlled expansion characteristics in the plastic stage while minimizing water demand. The low water requirement ensures high early strength and long-term durability. For larger repairs, mixed CEMSCREED HM (F) can be modified by the addition of 12 mm clean, graded, saturated, surface dry aggregates at site.

### Uses:

**CEMSCREED HM (F)** is used for repairing of column having major loss of section, repairs requiring high fluidity, repairs requiring significant levels of load bearing.

### Advantages:

- Compensates for shrinkage in the plastic stage
- Can be pumped or poured into restricted locations
- Highly fluid to allow placement without vibration
- Prepacked factory controlled to overcome site batched variations
- Rapid strength gain to facilitate early reinforcement
- High ultimate strength and low permeability of cured repair
- Does not contain any corrosive chemicals
- Ensures high tensile strength
- Specially reinforced with polypropylene fibre.
- Cost effective.
- Enhanced durability.

### Packing and Coverage:

**CEMSCREED HM (F)** is supplied in 25 Kg. lined HDPE bag.



## FAIRCRETE SB(L)

TACRYLIC EMULSION CEMENT MODIFIER AND CONCRETE BONDING AGENT

### Description:

**FAIRCRETE SB (L)** is a highly specialized acrylic copolymeric compound designed for use with cement compositions. It is used in mortar and concrete as an admixture to increase resistance to ingress of moisture/water, wear resistance and durable material. It is used with cement as a reliable water-resistant bonding agent. It can be used as a recommended primer for concrete repair systems.

### Uses:

**FAIRCRETE SB (L)** is used for bonding concrete repair, Floor screeds and toppings, renders and mortars, fixing brick slips and tiles, protection of steel from corrosion. Also used to give good bonding strength between steel and cement.

### Advantages:

- Early strength gain.
- Improves flexibility.
- Increases tensile strength.
- Reduces shrinkage.
- Prevents bleeding.
- Lower water cement ratio.
- Increases durability and toughness.
- High resistance to water penetration.
- Good abrasion resistance
- Prolonged corrosion protection.
- Proven performance.
- Similar thermal expansion and modulus properties to concrete (unlike resin mortars and primers).
- More user friendly & Non-toxic.
- Can be used with potable water.

### Packing and Coverage:

**FAIRCRETE SB (L)** is supplied in 200ml, 1 ltr., 5 ltr., 10 ltr. 50ltr. and 100 ltr. Containers.



## FAIRBOND EP SPECIAL

CONCRETE BONDING AGENT

### Description:

**FAIRBOND EP SPECIAL** is a general purpose two-pack solvent free epoxy resin which has been formulated especially for use with concrete. **FAIRBOND EP SPECIAL** has particular advantage of bonding firmly to touch damp surfaces.

### Uses:

**FAIRBOND EP SPECIAL** is used to bond renders, screeds or fresh concrete to existing concrete. Also used to bond together precast concrete sections. Used as a primer for an epoxy mortar and screed.

### Advantages:

- Excellent adhesion
- Increases bond strength
- Very good chemical resistance
- Low viscosity, easy to apply
- No primer required.
- Cures even on damp surface
- Ensure perfect waterproof bond.

### Packing and Coverage:

**FAIRBOND EP SPECIAL** is supplied in 1kg & 5kg packing. The covering capacity of **FAIRBOND EP SPECIAL** will vary depending upon the porosity & texture of the surface and the ambient temperature but as a general guide, 0.7 kg per m<sup>2</sup> should be allowed.



## CEMSCREED HS (R)

DUAL SHRINKAGE COMPENSATED, FIBRE REINFORCED, THIXOTROPIC STRUCTURAL REPAIR MORTR

### Description:

**CEMSCREED HS (R)** is dual shrinkage compensated, fibre reinforced, thixotropic, high strength structural repair which is suitable for placing in thickness of 10mm to 50mm for both vertically and overhead.

### Uses:

**CEMSCREED HS (R)** is suitable for hand and spray application for repairs where thickness of repair is more than 10mm. It is used to repair of spalling and damaged concrete in buildings, bridges, infrastructure and superstructure work .

### Advantages:

- Excellent bond to concrete substrates.
- Contains no chloride additives.
- Dual shrinkage compensated for use in structural reinstatement applications.
- Impermeable to aggressive elements
- Prepackaged to provide reliable and reproducible site results
- For structural repair programs reinstating chloride attacked or structurally damaged concrete.
- Suitable for repairs in marine environments where gun applied mortar is required.

### Packing and Coverage:

**CEMSCREED HS (R)** is available in 25 kg bags. One bag will yield 12.5 litres.

